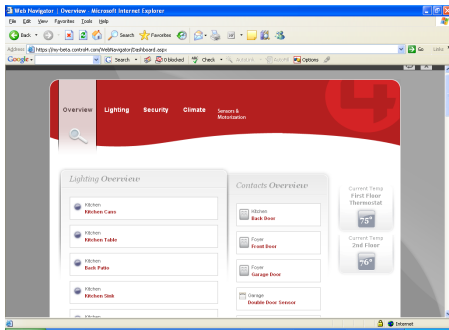


## 4Sight Registration and Web Navigator Quick Start Guide



### Introduction

The Control4® document provides activation, setup, and usage information for 4Sight premium web services for your Control4 system. It guides you through the process of setting up a my.control4.com account, connecting your Control4 Controller to the web, and using Web Navigator—the web user interface that allows you to control individual devices in your Control4 system from a remote location.

### Activate 4Sight Subscription

To activate your 4Sight subscription, you must create a my.control4.com account and register your Controller:

- 1 On the local computer, use a web browser to go to [my.control4.com](http://my.control4.com).
- 2 Click **create account** (top of the screen) or click [here](#) under 'Registering Your Controller.'
- 3 Complete the 'Create Consumer Account' form and write down this information:

Account: \_\_\_\_\_

Email: \_\_\_\_\_

Password: \_\_\_\_\_

- 4 Accept the Terms of Use (bottom of the screen).
- 5 Click **Create Account**.

- 6 When registration is successful, an email verification will be sent to your email address.
- 7 When prompted, enter the 10-digit **Registration Code** for your Controller, provided in the email.

### Configure Remote Access

The customer can use their On-Screen Navigator or Touch Screen to configure Remote Access or the Control4 Installer can use the Composer Pro software to do this.

#### Configure Remote Access with the On-Screen Navigator or Touch Screen

To configure Remote Access using one of the Navigator options:

- 1 Ensure that your Control4 Controller has a network connection to the web.
- 2 At the On-Screen Navigator or Touch Screen home page, choose **More > Settings > Remote Access**.
- 3 Select **Enable**.
- 4 You can also enable Remote Access from the Account Profile page (bottom of the screen) in [my.control4.com](http://my.control4.com).

#### Configure Remote Access in Composer Pro (Installers Only)

To configure Remote Access using Composer Pro, your Control4 Controller must have a network connection to the web. See the *Composer Pro Getting Started* guide for full details.

- 1 On the computer connected to your local network, start **Composer Pro**, click **Director on Local Network**, and then select a Director. Your Controller's system project is displayed.
- 2 From the Tools menu, select **Account Services**.
- 3 Complete the information in the 'Account Services' box.
  - a Ensure that the Controller is registered. (The button should say 'Unregister.')
  - b Select **Enable Remote Access**.
  - c Activate the 4Sight Internet Services subscription.

## 4Sight Registration and Web Navigator Quick Start Guide

- d Establish a temporary connection using Check In.

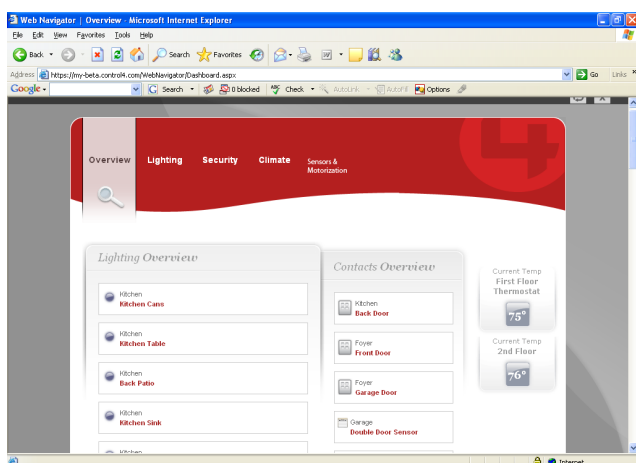
For more detailed instructions, see *Composer Pro Getting Started* - topic or section, "Configure Remote Access."

### Use Web Navigator

To control devices on your Control4 system from a remote location (on the web):

- 1 Access Web Navigator.
  - If you are already logged into my.control4.com, from the My Account tab, choose **Web Navigator** (on the left). If you've successfully connected a Controller, the Account Profile page opens.
  - If you are not currently logged into my.control4.com, log in now. The Account Profile page opens.
- 2 Click **web navigator** (left side).
- 3 Select whether you want to connect to the Flash Version or the HTML Version of Web Navigator. The following page displays if HTML is selected.

Figure 1. Web Navigator Home Page

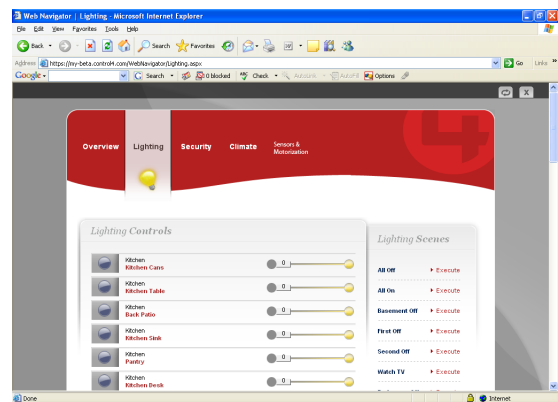


- 4 View the entire system at a glance (using the scroll bar on the right as needed).

The Web Navigator's home page shows all system components grouped by subsystems. The status of each component is indicated by its displayed icon.

- 5 Select Overview, Lighting, Security, Climate, or Motorization & Sensors at the top of the screen.
- 6 View or change Lighting:
  - a At the top of the screen, click **Lighting**.

Figure 2. Lighting View



- b Under Lighting Controls, the lighting status icons are displayed along with a slider bar. To change a setting:
  - To turn a light On, click the ball at the right end of the slider bar.
  - To turn a light Off, click the ball at the left end of the slider bar.
  - To set a Dimming Level, click and drag the slider to the percentage of On desired.

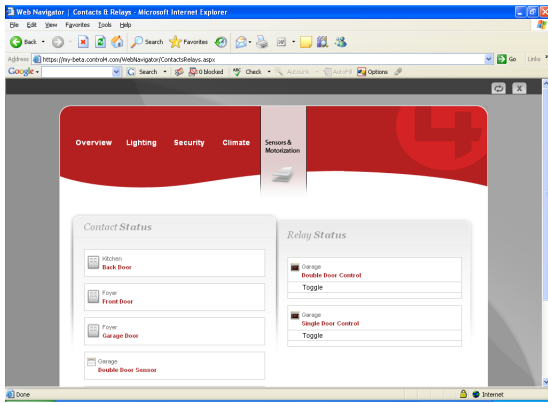


**NOTE:** Supported switch settings are On or Off only. (The dimming slider bar applies to Dimmers only.)

- c Under Lighting Scenes, the list of available lighting scenes is displayed. To activate a scene, click **Execute**.
- 7 Check or change Security settings:
  - a At the top of the screen, click **Security**.



Figure 7. Motorization & Sensors View



- b** Under Sensor Status, view the sensor status.
- c** Under Motorization Status, view or change the motorization status.
  - To close an opened relay, click the relay's icon.
  - To open a closed relay, click the relay's icon.

## About This Document

Part number: 21-9996, Rev. B, 2/10/2012